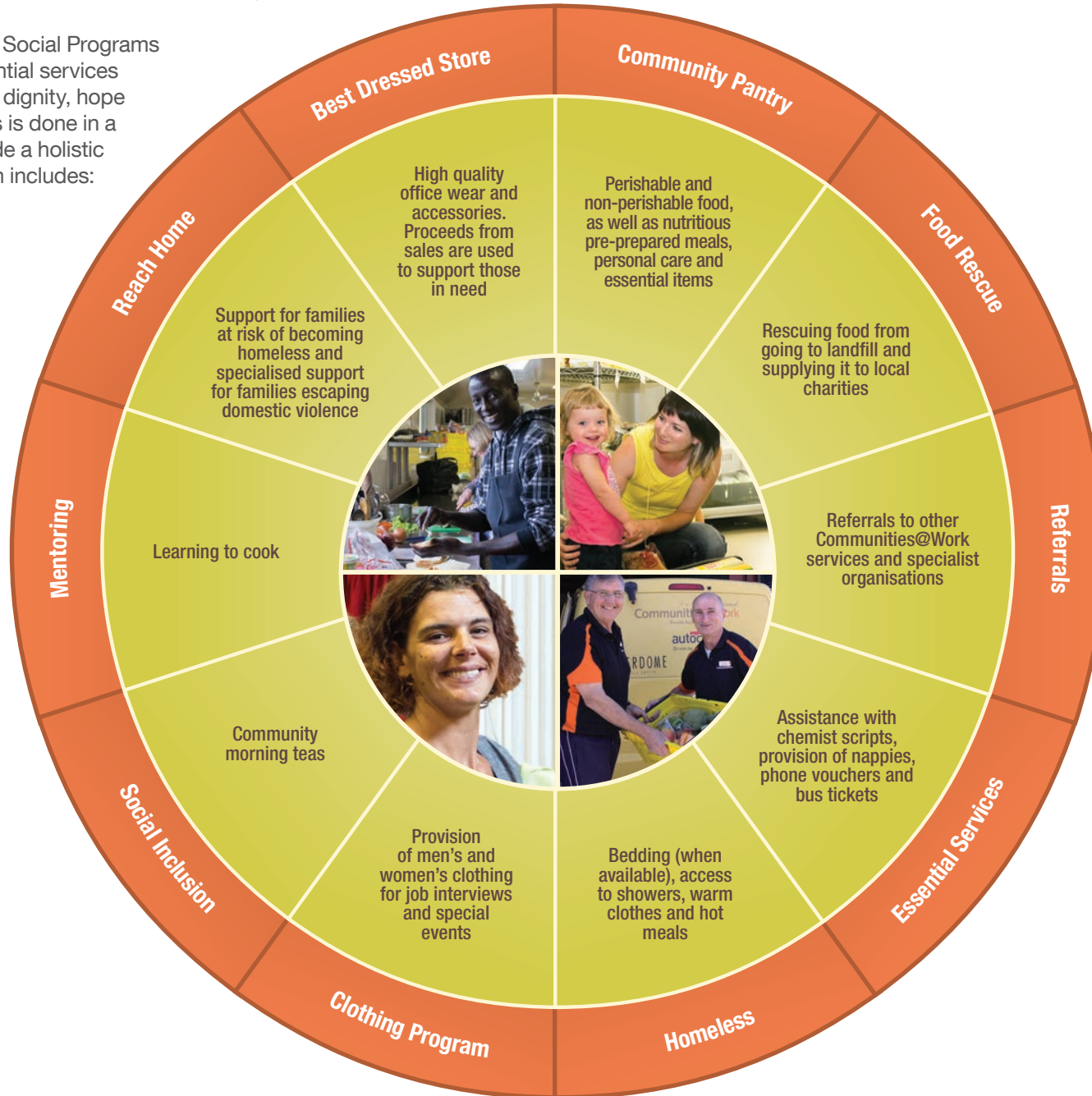


Communities@Work

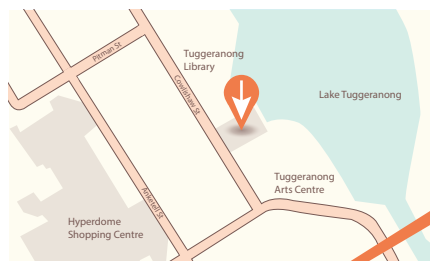
Communities@Work's Social Programs provides food and essential services with a focus on instilling dignity, hope and empowerment. This is done in a myriad of ways to provide a holistic service approach, which includes:



Central Office

Tuggeranong Community Centre
245 Cowlishaw Street
Greenway ACT 2900

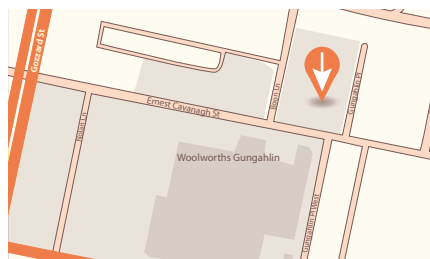
P: (02) 6293 6500
F: (02) 6293 6555
E: admin@commsatwork.org



Gungahlin Campus

Gungahlin Community Centre
47 Ernest Cavanagh Street
Gungahlin ACT 2912

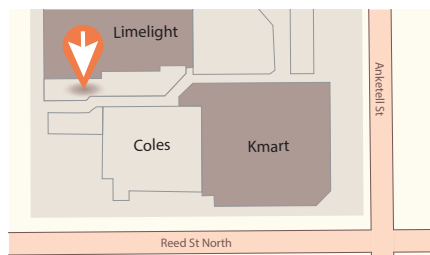
P: (02) 6228 9200
F: (02) 6242 8201
E: admin@commsatwork.org



Best Dressed Store

Hyperdome
Upstairs near Coles entrance
Anketell & Reed Steets
Greenway ACT 2900

P: (02) 6293 6500
F: (02) 6293 6555
E: admin@commsatwork.org



Visit us at commsatwork.org

“ Communities@Work has supported me with all sorts of things. I have learnt to cook, I have joined a book club, met new people at the local playgroup and walk around the lake with a group of people once a week. The team knew what I wanted and was able to help me get involved.

Gemma, 32

