

CENTRE OF PROFESSIONAL LEARNING AND EDUCATION (CPLE)

WINNER
2019 • 2020 • 2021 • 2022

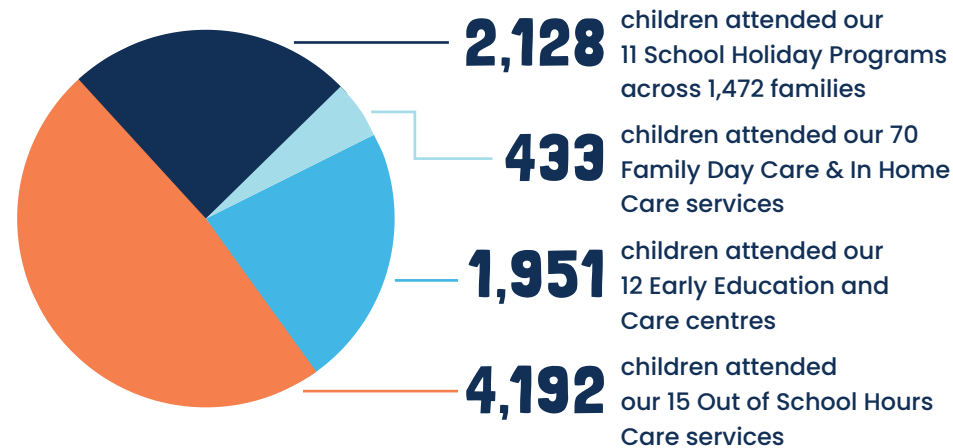
ACT LARGE
EMPLOYER OF
THE YEAR

ACT TRAINING
AWARDS 2022



CHILDREN'S SERVICES

8,704
children in total
attended our
Children's Services



We supported
564 EDUCATORS
to provide education and care
across our Children's Services

We supported
66 VULNERABLE CHILDREN
to access free quality early
childhood education through
the 3 Year Old Initiative
(up from 33 in 2021)

429
children from
300 families in
Family Day Care.

60
online playgroup
sessions run to keep
educators and
children connected
during covid.

58
educators and
up to 232 children
attended 5 playgroups
each week

communities
atWork

ANNUAL REPORT 2021 – 2022 HIGHLIGHTS



COMMUNITY DEVELOPMENT

66
PEOPLE
attended our
Window into
Wellness series



We supported
**8 NEW COMMUNITY
BUILDING ACTIVITIES**
in partnership with Capital
Estate Developments



Supporting the development of
**2 MEN'S PEER
SUPPORT TABLES**
with 2 more tables planned.

DISABILITY AND SENIOR SERVICES

Our transport team drove the equivalent of
**13 TRIPS AROUND
THE WORLD**
(or 519,236 kms over 24,259 trips and
19,869 hours) to help clients get to medical,
social and community appointments.



We gave
4,732
hours of domestic assistance
to 121 seniors clients

We gave
1,365
hours of individual social
support to 59 seniors clients

We gave
8,558
hours of group-based
social support across 6
seniors social groups to keep
seniors connected

Our clients were transported by
**26 DRIVERS
AND A FLEET OF 12 VEHICLES**
(8 cars, 2 vans,
2 minibuses)

We improved the
life skills of
83
CLIENTS
through 17,200
hours of
client support

SOCIAL PROGRAMS AND VOLUNTEERING

COMMUNITY PANTRIES



FOOD RESCUE

**WE SAVED
43,000 KGS
OF FOOD**

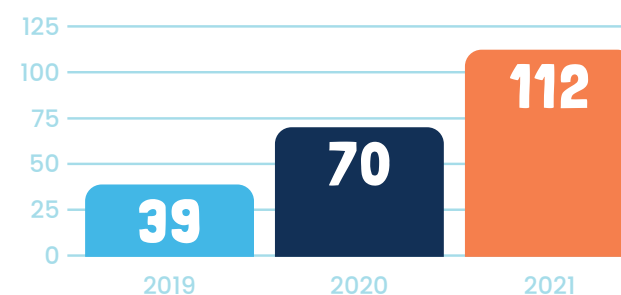
from going to land waste through our
Food Rescue service. That's 16 trolleys of
food per week to stock our food pantries.
(*based on 50kgs/trolley)



CHRISTMAS APPEAL



Our Christmas Appeal
Giving Tree Hosts



REACH HOME



CRISIS SUPPORT



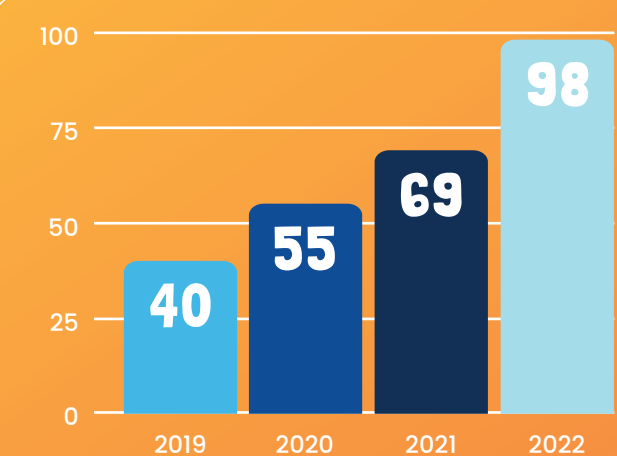
VOLUNTEERS



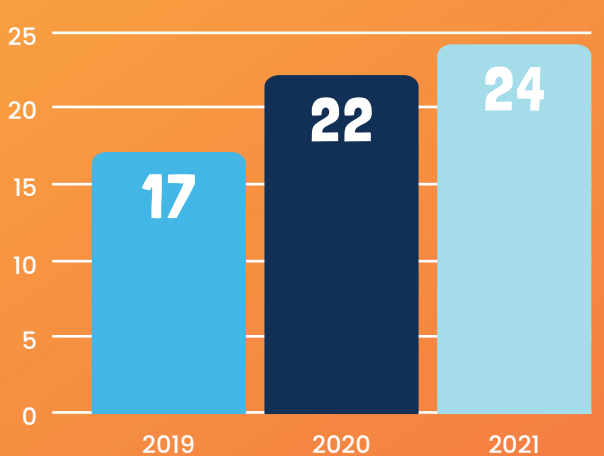
GALILEE SCHOOL



TOTAL STUDENT ENROLMENTS



TOTAL YEAR 10 GRADUATES



BEST DRESSED STORE

